

THE OMEGA SECTOR

Book One: Hold the Line



RL Smith



EP1 - Hold the Line

UNION PRIME - FOB STATION 3 -
OMEGA SECTOR

CLASS 4 - PLANET
ONE MOON
PRIMARY RESOURCE - ARGON
SECTION 298

LOG 698

UNION PRIME, OUR FIRST INSTALLATION FOR BORDER CONTROL IN THE OMEGA SECTOR. ONE PLANET, UNINHABITABLE, FULL OF ARGON GAS. IN A UNIVERSE OF SLIM RESOURCES, IT WAS A PERFECT CHOICE. UNION PRIME HAS A SINGLE MOON THAT ALLOWS FOR A SMALL FORWARD OPERATING BASE. THIS SUPPORTS OUR ATTEMPTS TO HOLD THE BORDER AGAINST THE LEVIATHAN. THE LEVIATHAN HAVE RAVAGED OUR INSTALLATIONS, OUR PERIMETER PLANETS, AND OUR COLONIES. WITH EVERY RAID, OUR EXISTENCE GROWS SMALLER. UNION PRIME IS OUR FIRST BEST ATTEMPT AT TAKING THE FIGHT TO THEM. THE LEVIATHAN FLEETS ARE SLOW BUT MASSIVE AND ARE A THREAT TO ANY PLANET THEY ACCOST.

STATION 23 NOW HOLDS THE ORBIT AT PRIME AND UNDER THE CLOSE AUSPICES OF THE 3RD FLEET LED BY ADMIRAL AKOI. I AM THE CAPTAIN OF A RUNNER-CLASS FRIGATE CM-328, AFFECTIONATELY DUBBED THE 328. WE HAVE CURRENTLY BEEN REASSIGNED TO RECOVER RESOURCES FROM A CRIPPLED ENEMY FREIGHTER.

THE MISSION IS UNDER-SOURCED AND THERE IS NO WAY I CAN SPIN THIS FOR MY CREW. THERE ARE TOO MANY WAYS THIS CAN GO SIDeways AND THEY KNOW IT TOO. THIS MISSION DEFINITELY LETS US KNOW WE ARE EXPENDABLE.

CAPTAIN TYSON REDDER -
UNION ASSET: RUNNER-CLASS FRIGATE CM-328

BORN TERRA 5
AGE 32

CM-328:
RUNNER-CLASS

CREW 8
SYNTHETICS: 36
DRONES: 8
FIGHTERS: 0
MECHS: 2
SCOUT SHIPS: 1

Story by: RL Smith
Design by: RL Smith

TERRA 5 - RED PERIMETER

LOG 693

WE ARE CURRENTLY ATTACHED TO THE SKY HAMMER, A DESTROYER CLASS STARSHIP. THIS LATEST RECOVERY MISSION WILL REQUIRE US TO LEAVE THE SKY HAMMER AND TERRA 5 SPACE. SHIPS THAT CREATE A NAME FOR THEMSELVES DROP THEIR MANUFACTURING DESIGNATION. THE SKY HAMMER IS ONE OF THE BEST WE HAVE TO OFFER.

SKY HAMMER:
FIGHTER CLASS

CREW 70
SYNTHETICS: 280
DRONES: 0
FIGHTERS: 20
MECHS: 0
SCOUT SHIPS: 0
HULL STRENGTH: 5000 KG/N
FIREPOWER: TORPEDOES AND CLASS 1 FUSION BEAMS

Captain, leaving our escort to salvage a crippled enemy freighter is clearly a move to provoke the Centari. We most definitely will be met with hostile resistance.

1ST LIEUTENANT KYLE ASHUMD -
1ST OFFICER - CM-328

BORN TERRA 5
AGE 52

2ND LIEUTENANT RONNIE CHO -
MUNITION SPECIALIST CM-328

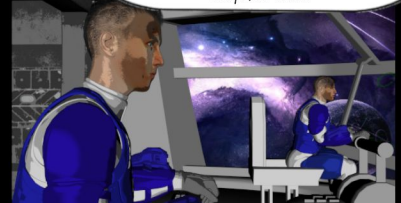
BORN TERRA 2
AGE 27

2ND LIEUTENANT JOHN SPENCER -
HELMSMAN CM-328

BORN TERRA 2
AGE 23



This mission is no good. An enemy freighter just sitting crippled in hostile territory. It's a trap. Why does the brass want to sacrifice a ship for that?



Lieutenant, whether we provoke the Leviathan or not we need the cargo that the freighter was moving. The crippling of the freighter was no accident. We have an asset on board. They gave their life for this mission.

Ikelos-471 Epsilon

102,544 km
221,355,030 km
14.95 hours
14.9 years

Atmosphere: Hydrogen, Helium, Nitrogen
Gravity: 1.87
Std. Temp: -134 C
Moons: 29



Weapons Shields

North Portside	100	100	100	100
Eastside	100	100	100	100
Ullastator	100	100	100	100
Janalin	100	100	100	100
Deat	100	100	100	100
Spear	100	100	100	100
Arms	100	100	100	100
Lance	100	100	100	100
Hammerhead	100	100	100	100
Inquistive	100	100	100	100
Invisible	100	100	100	100
Whirls	100	100	100	100
Conquistador	100	100	100	100
Whisper	100	100	100	100
Thousand	100	100	100	100
Cavalier	100	100	100	100
Tide	100	100	100	100
Vortex	100	100	100	100

Captain, I wasn't aware. Do you think it is wise to communicate with the Leviathan? I see ample opportunity for us to be persuaded to enter a trap under these circumstances.

CM-328 - MISSION ROOM

Ships: 18
Destroyers: 3
Cruisers: 5

Fleet is willing to take that risk. If what was reported on board is actually on the freighter, this mission will be worth it. But if not, well we are just one runner-class starship. Understand Lieutenant?

Janalin	100	100	100	100
Deat	100	100	100	100
Spear	100	100	100	100
Arms	100	100	100	100
Lance	100	100	100	100
Hammerhead	100	100	100	100
Inquistive	100	100	100	100
Invisible	100	100	100	100
Whirls	100	100	100	100
Conquistador	100	100	100	100
Whisper	100	100	100	100
Thousand	100	100	100	100
Cavalier	100	100	100	100
Tide	100	100	100	100
Vortex	100	100	100	100

NET OPS

Mission: We jump into common space with the freighter: designation black-box. Black-box was crippled via reactor sabotage. They blew it. It's radioactive now. But our shields will protect us from plasma radiation.

Sir, if they blew the reactor it will be a ball of plasma ready to collapse. We can't be in common space when that thing goes. We are going to jump in with it and tow the cargo out of the ship? Wouldn't that put the 328 at risk?

I won't be putting the 328 at risk. We will keep our distance. Ronnie will take a mech out to the black-box for recovery. He'll cut in with a photon cutter and use a gravity weld to tow the cargo back to the 328. This mission requires a fast in and out.


Sir, whether you keep your distance or not if the plasma field collapses our shields will not hold. Lieutenant Cho is not going to like this. I hope our new helmsman is up to the task. Do you think now is the best time to....

James	100	100	100
Diary	100	100	100
Spina	100	100	100
Arnie	100	100	100
Lance	100	100	100

Manfred	100	100	100
Estimote	100	100	100
Liberty	100	100	100

James	100	100	100
Diary	100	100	100
Spina	100	100	100
Arnie	100	100	100
Lance	100	100	100

Manfred	100	100	100
Estimote	100	100	100
Liberty	100	100	100

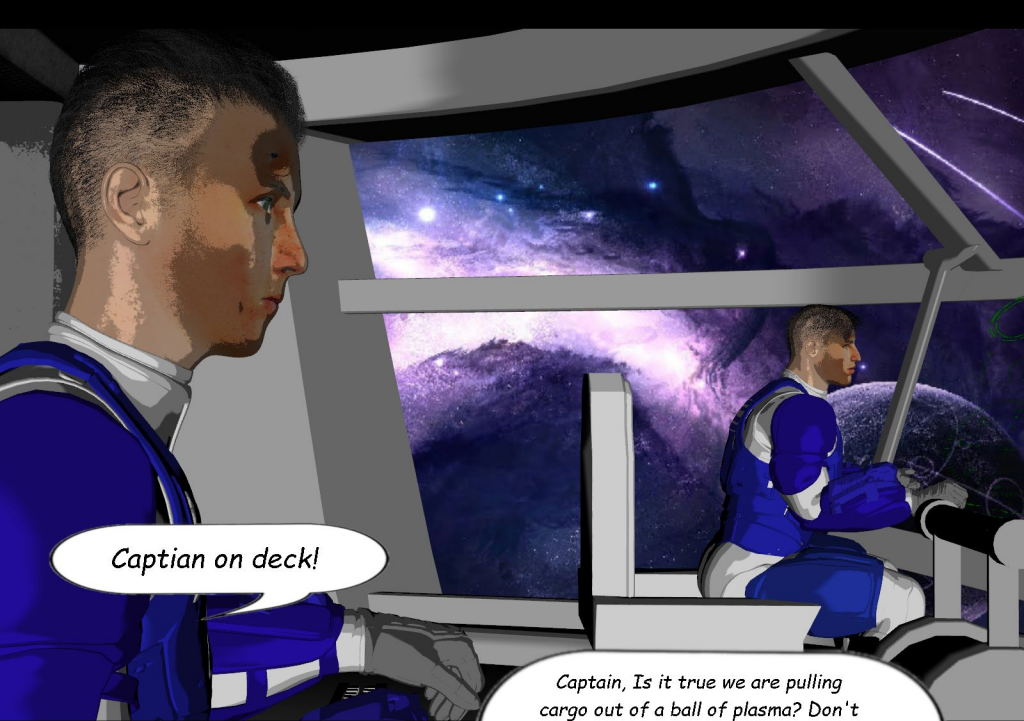


To what Lieutenant?

...find out what kind of pilot he is?

Aye sir, I will begin scans of the area on arrival. Shall we brief the bridge crew?

BUSINESS SIAIE: YELLOW
BUSINESS SIAIE: GREEN




Captian on deck!


Captain, Is it true we are pulling cargo out of a ball of plasma? Don't you think it would be better to dig through the trash than dig through the fire?




Lieutenant Cho. We are hoping the Centari look at it that way too. We wouldn't last long against any class 3 warship in the area. We are hoping that the threat of the plasma implosion will keep them away long enough for us to do the job. Cho, take a mech out there to tow out the cargo. Mr. Spencer move us toward the black-box.



Aye Captain, entering common space now. I've got black-box on LR camera..




Captain, the initial scan shows 80% of the hull intact but Leviathan life-support systems have failed. I'm reading no life signs. No other ships are in the area.



Leave it to Leviathan design to blow a reactor and still maintain hull integrity.



We will maintain our distance. Awaiting your final order to prosecute our mission directives.



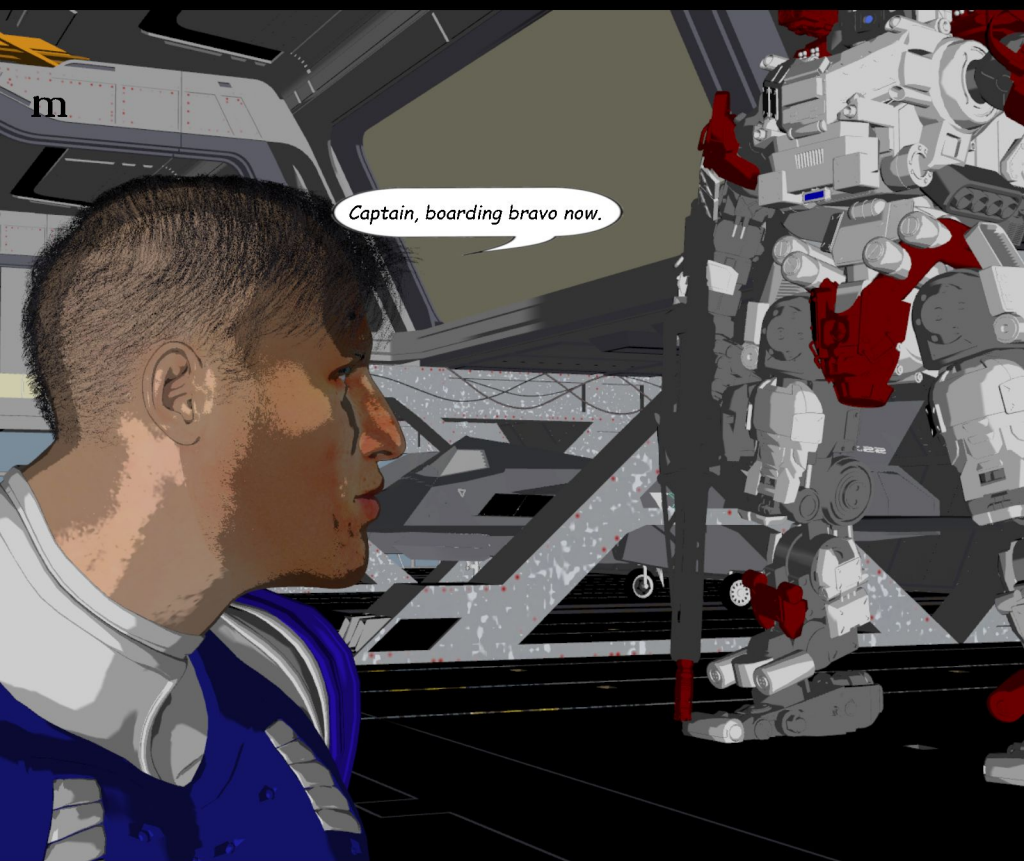
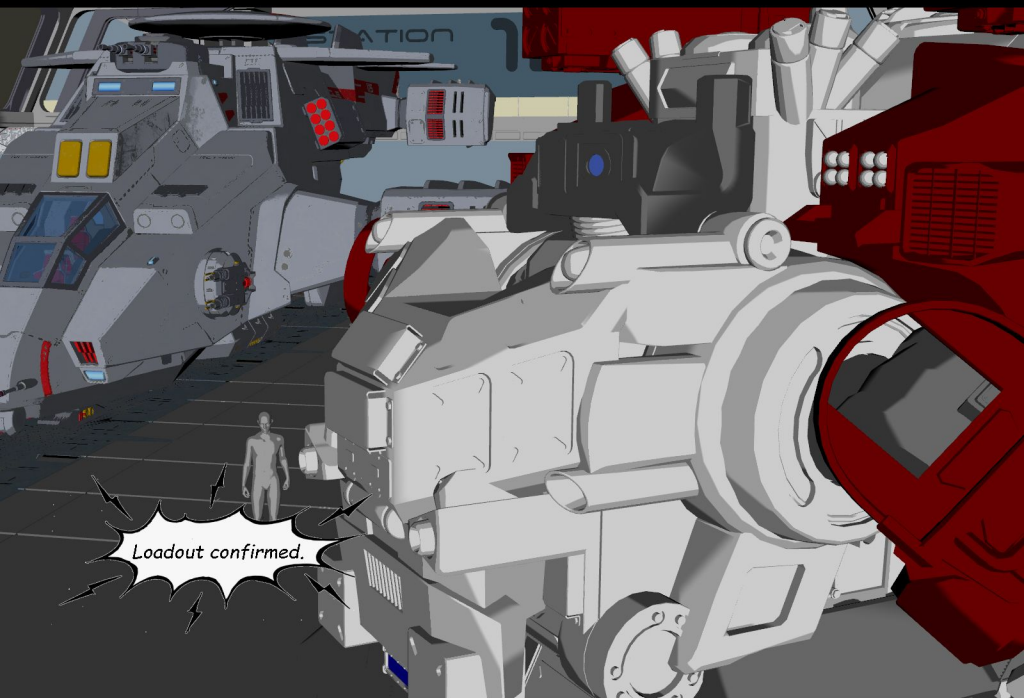
Lieutenant Cho, move to the hangar and dispatch immediately. CM-328 will run sector scans and maintain overwatch. Go now!




CM-328 -
SIDE OPERATIONS HANGER



Confirm mech bravo loadout for
recovery.





Quick in and out. Loadout
bravo, fuel cells charged, main
asset plasma cutter. No
weapons. Hope I don't run into
anything live out there.

If you did, I guarantee they
won't like your plasma cutter
either.

Yeah but still..You can't beat a
frac-nuke in a Leviathan knife
fight. I'm just saying is all. You
know this is my favorite part of
the job.

Plasma cutter charged, mech
bravo ready for dispatch. Go
sequence on your mark.




Prime life support and prepare to break service links.




Checking systems and preferences. I think I'll skip the oil change for today and just charge the reactor.

Cho, the sooner the better. The ship is still stable now but the situation is very fluid. Drop the levity and launch.





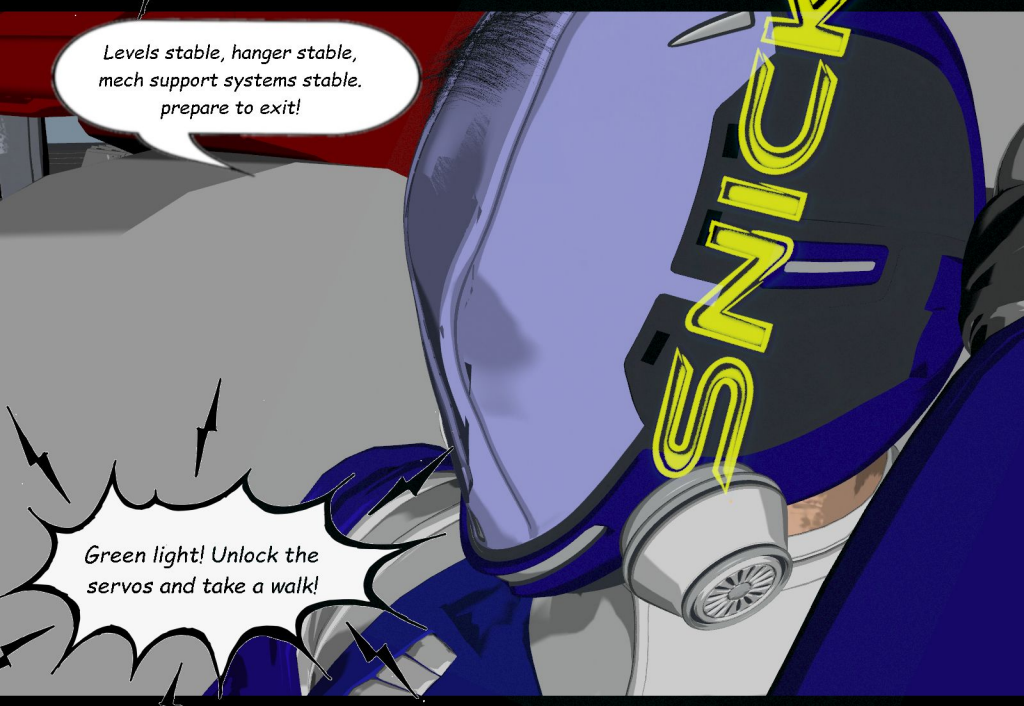
Copy that Lieutenant: Life support charging. H.U.D. coming online. Prepare the hanger for depressurization.



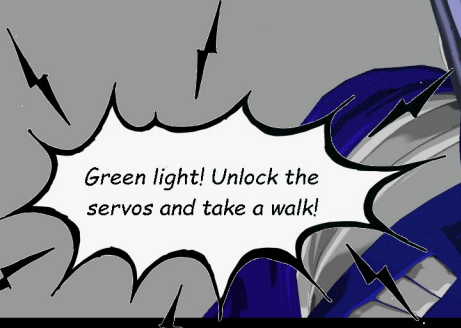
Green light. Good to pop the hanger..



Depressureizing!



Levels stable, hanger stable, mech support systems stable. prepare to exit!



Green light! Unlock the servos and take a walk!

BATTLE MECH
GP (GENERAL PURPOSE) CLASS

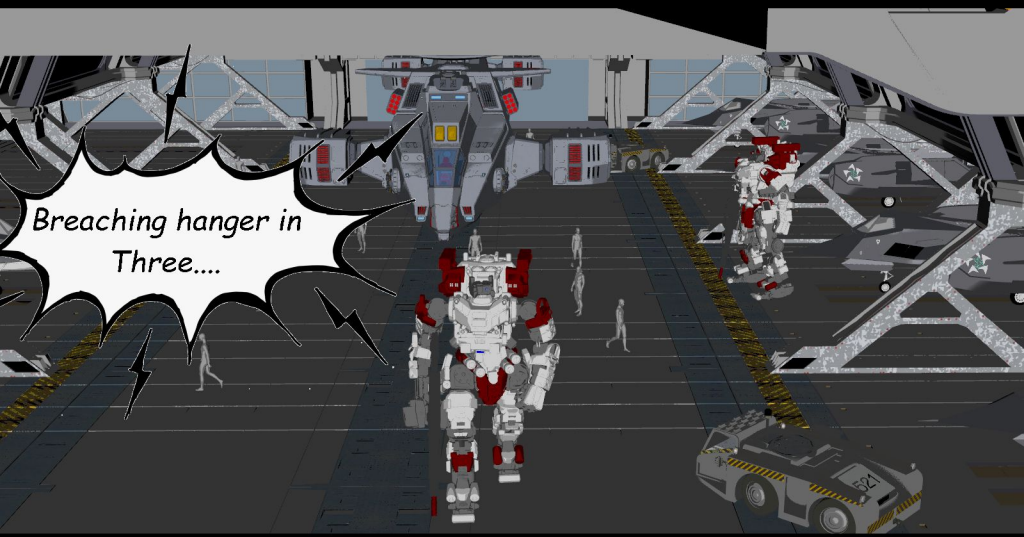
CREW: 1
SYNTHETICS: NA
DRONES: NA
FIGHTERS: NA
MECHS: NA
SCOUT SHIPS: NA
HULL STRENGTH: 60 KG/N
FIREPOWER: PLASMA CUTTER

THE BATTLE MECH WAS DESIGNED AS A RESPONSE TO THE LEVIATHAN INVASION. IT WAS THE UNION'S BEST ATTEMPT TO LEVEL THE BATTLEFIELD IN TERRAIN WARFARE. MECHS HAVE SINCE BEEN USED IN MANUFACTURING, EXPLORATION, AND WARFARE.

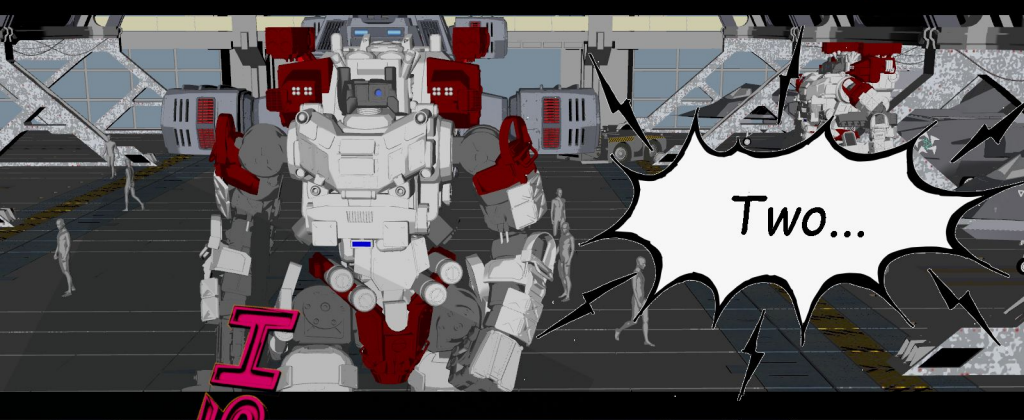
Rightous 328, un-locked and ready to rock!

Cho, you'll have 1 hour from hangar departure to return. After, 328 will exit the sector. Good luck!





Breaching hanger in
Three....



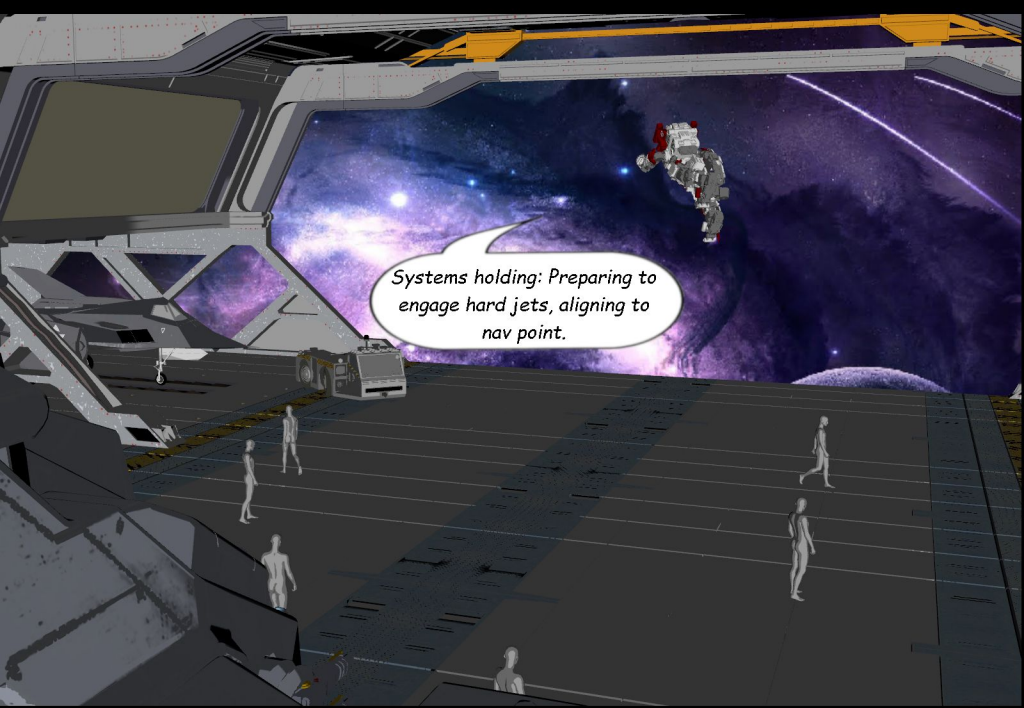
Two...



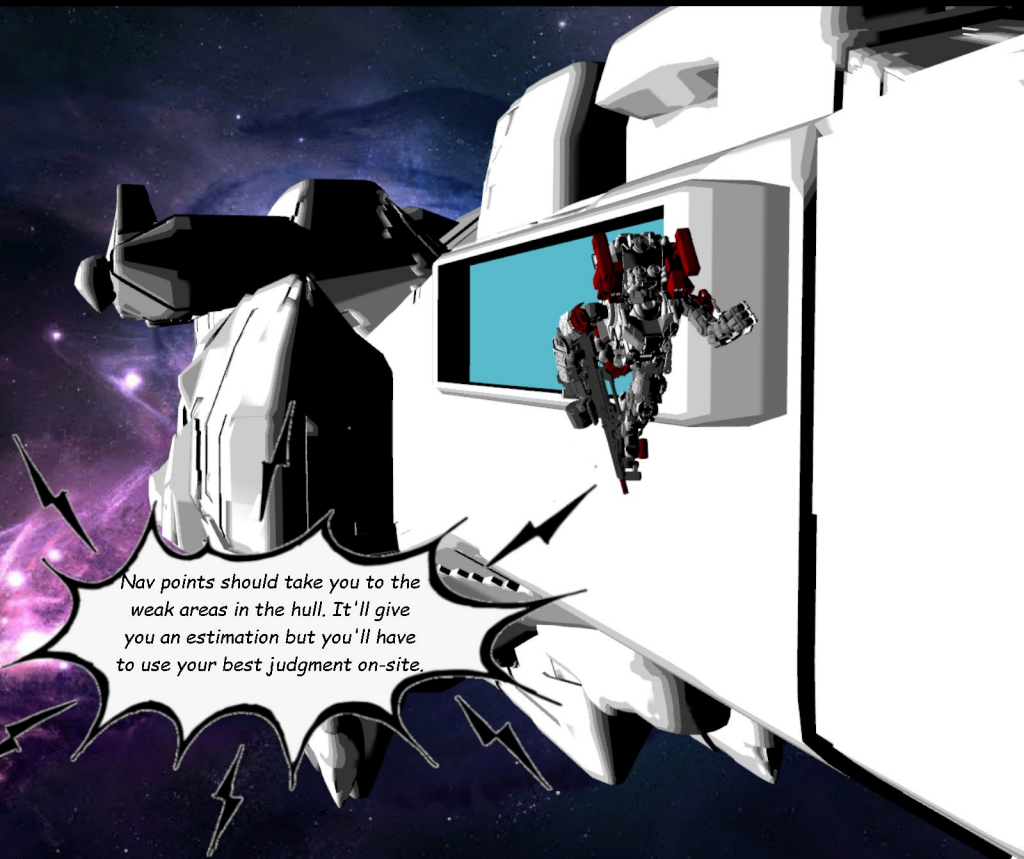
Keep the light on for me...

One

SHOOT!



Systems holding: Preparing to engage hard jets, aligning to nav point.



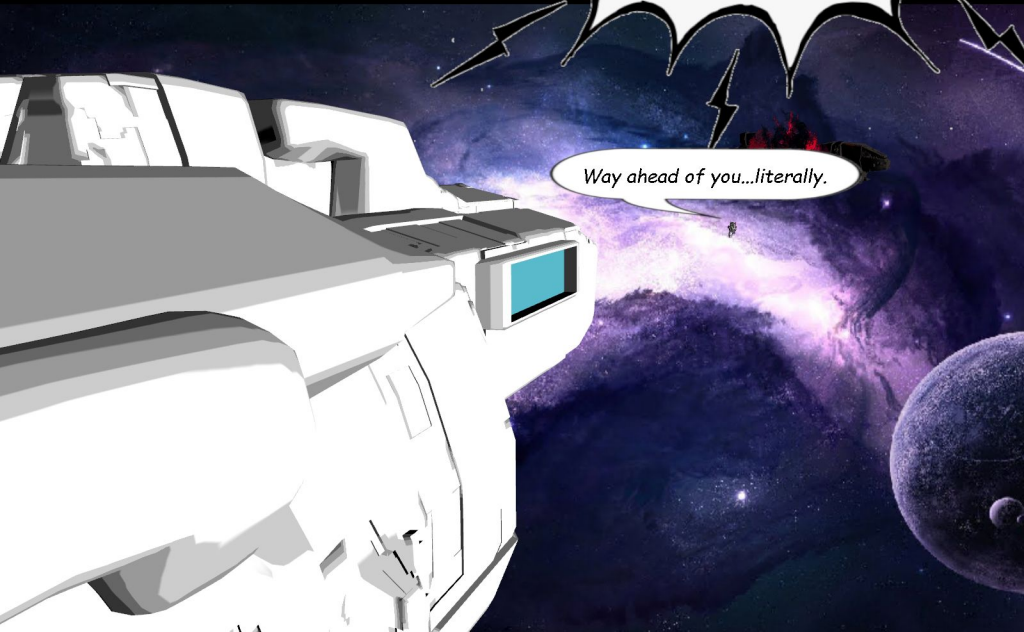
Nav points should take you to the weak areas in the hull. It'll give you an estimation but you'll have to use your best judgment on-site.




Transfer me the visual from LD1. I still don't have good visual.



Sector scans are still clear. The black-box is stable. It looks like the plasma flux is focused on the upper-stern. You'll need to cut in from underneath.



Way ahead of you...literally.




50 kilometers and closing.


*Sky's still clear. Black-box stable.
40 kilometers and closing. You may
want to slow your speed,
Lieutenant.*









Ready...ready for the big ride
baby...



Hey, once I'm in I'll jump the
hanger bay to see if I can get
out easier.



Lieutenant, ship scans show a
auxiliary power should be
available. You should be able to
get the hanger open once inside.



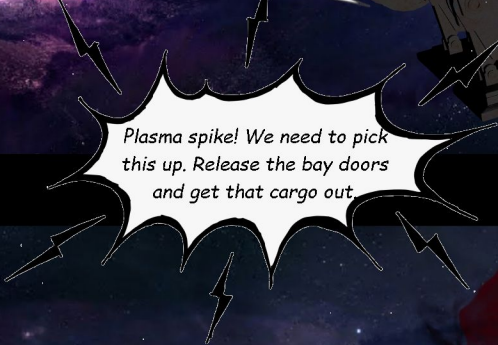
Captian, mission parameters are
all in the green. He should make
it in time.



CRACKLE

CRACKLE

I'm in...

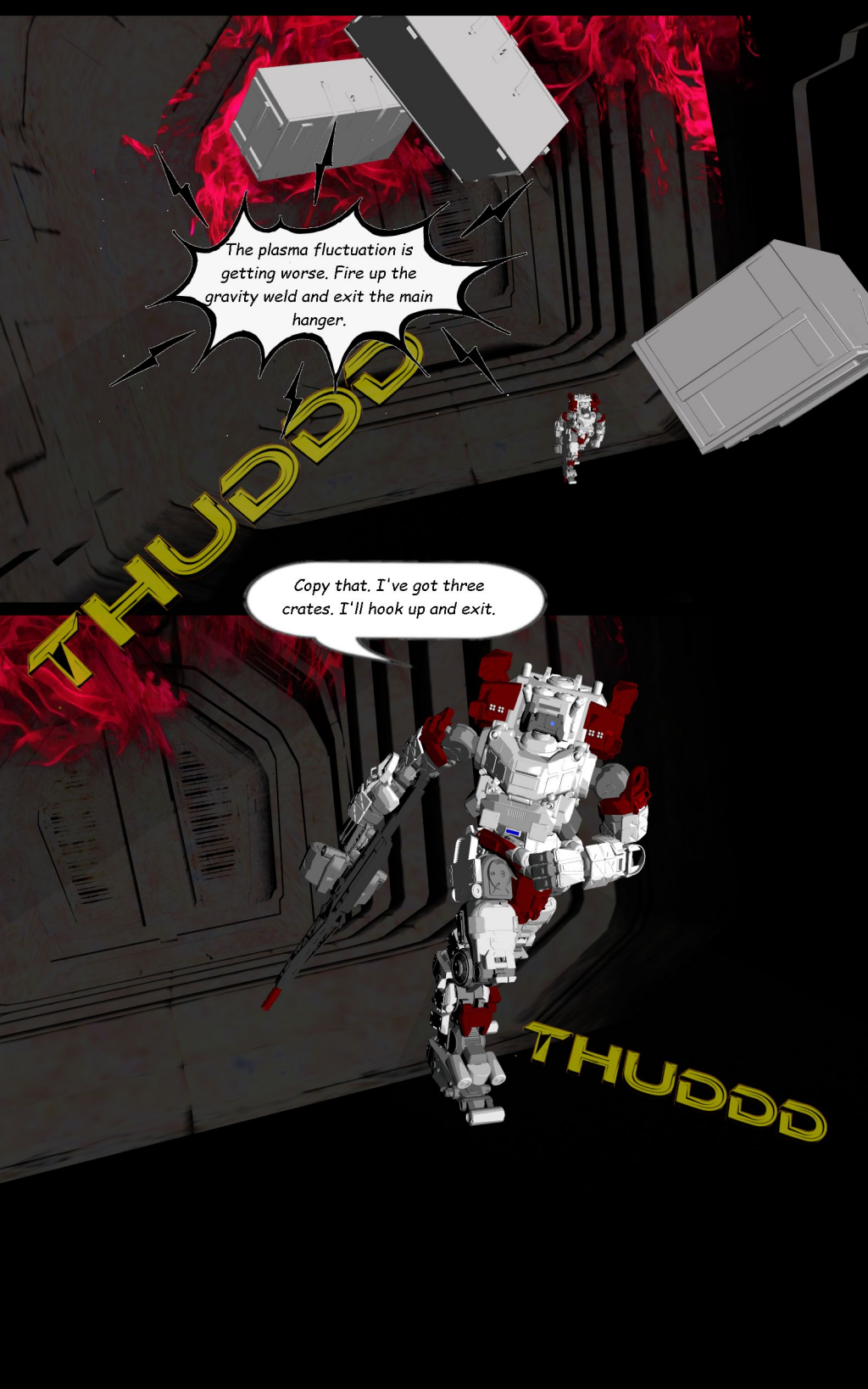


Plasma spike! We need to pick this up. Release the bay doors and get that cargo out.



CRACKLE

CRACKLE



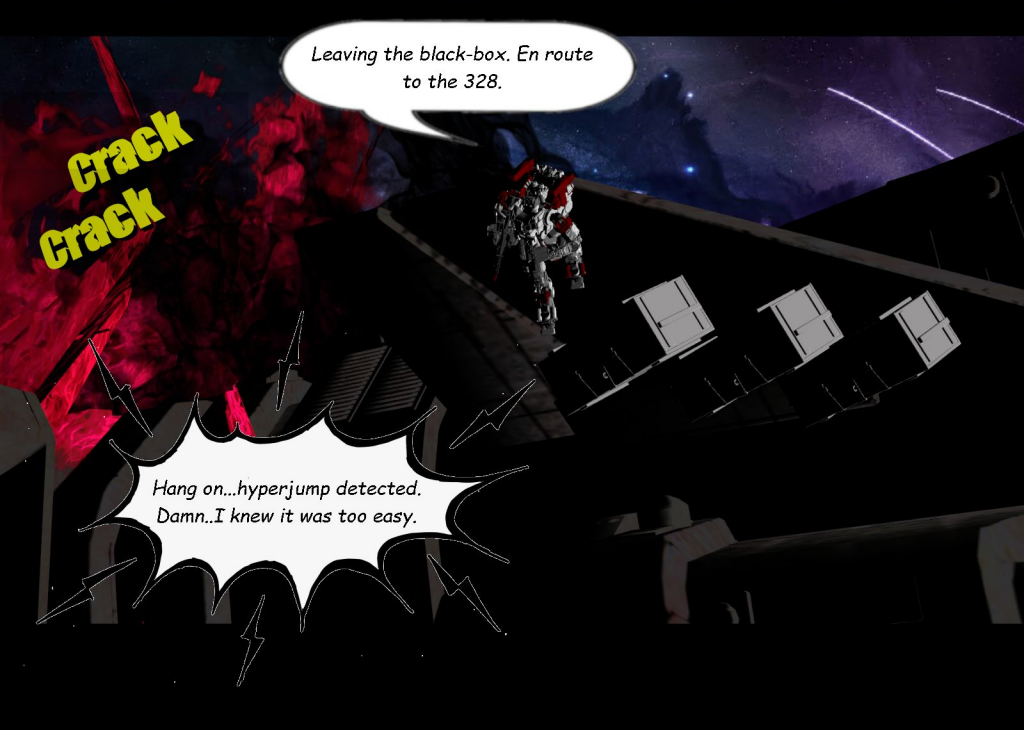
The plasma fluctuation is getting worse. Fire up the gravity weld and exit the main hanger.

Copy that. I've got three crates. I'll hook up and exit.

THUDDDD



and I'm out. See, easy. Locking on to the beacon and heading back to the ship.



Leaving the black-box. En route to the 328.

Hang on...hyperjump detected.
Damn..I knew it was too easy.

WOOO

It's a class 2. It's a Leviathan destroyer! It's jumped in right over the recovery point!

Alert Red! Send comm to fleet.
We have been engaged!

OO
SHIT

That's a big ship...

CLASS 2 CENTARI DESTROYER:
LEVIATHAN DESTROYER CLASS

CREW 80
SYNTHETICS: NA
DRONES: NA
FIGHTERS: 40
MECHS: NA
SCOUT SHIPS: NA
HULL STRENGTH: 10000 KG/M
FIREPOWER: HULL CUTTERS, TORPEDOS, ION
DISRUPTERS, AND FUSION BEAMS.

APPEARED IN THE ATTACK ON TERRA 7.
THESE SHIPS WERE INSTRUMENTAL IN
DESTROYING DEFENSIVE OUTPOSTS IN
CIVILIAN SECTORS. THEY SINGLE-HANDEDLY
DECIDED THE OUTCOME AND SEALED THE
LOSS OF THE SECTOR AGAINST NUMEROUS
UNION DESTROYERS.



POP
FIZZZZ
CRACK

Captain?

Return to the ship, double time.
Burn your scramjets.

To be continued...

EP2 Hold the Line Pt. 2

Coming Soon